

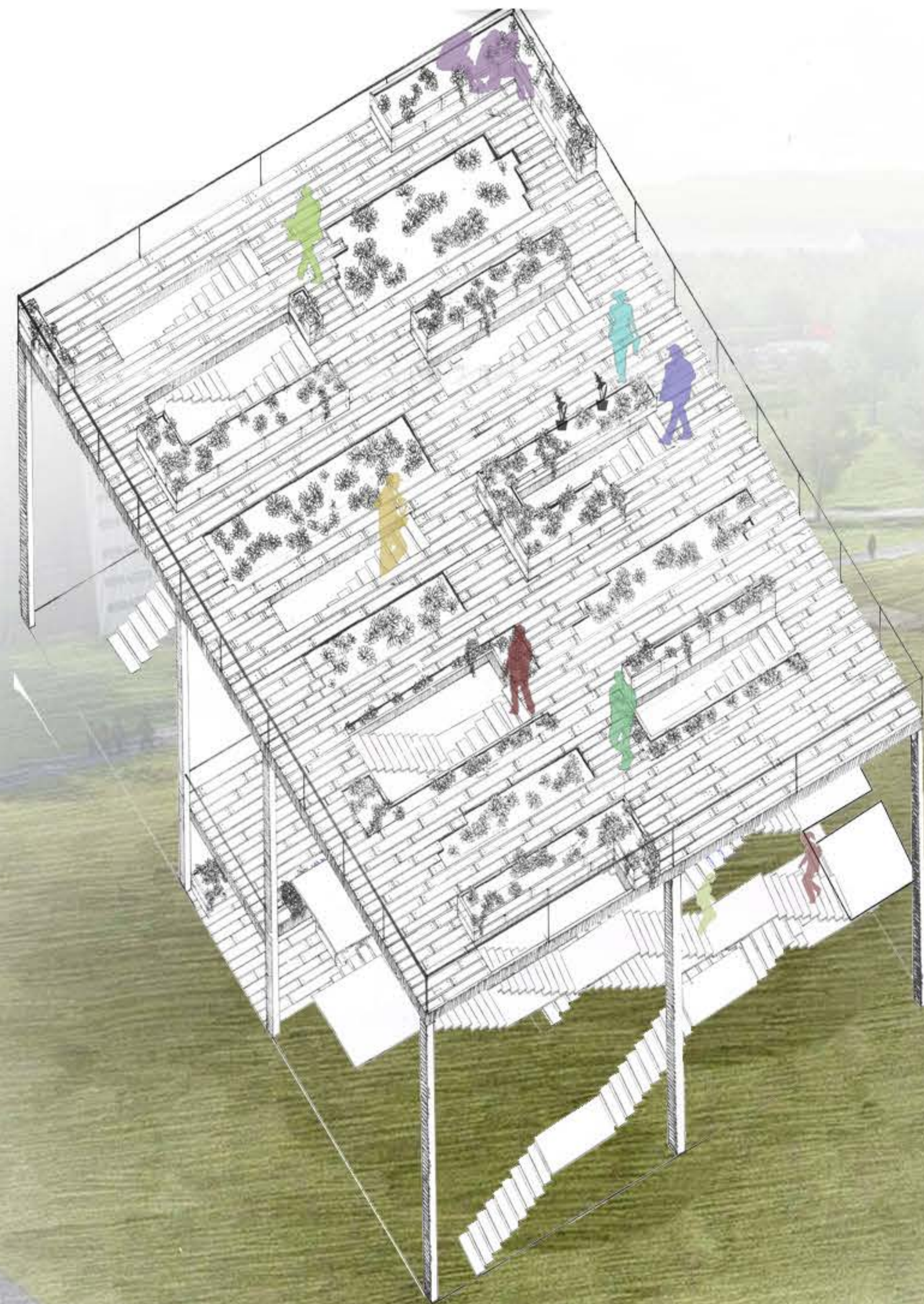
Our proposal consists of a vertical mass, made up of a series of staircases and platforms, with a main viewing area on the top of the structure.

The proposal aims to raise awareness of the Hazardous Waste transported throughout Europe.

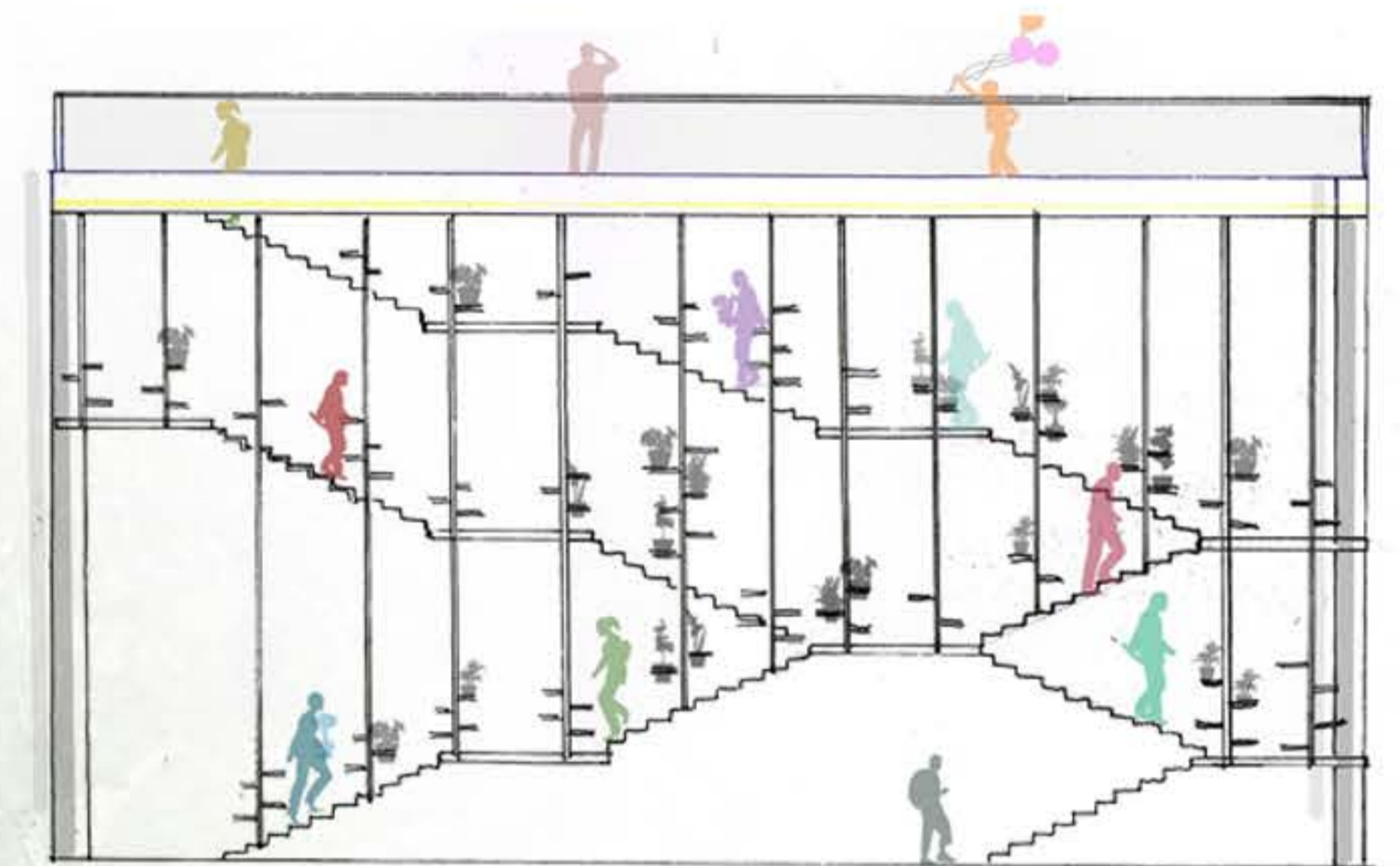
The pathways of such waste are represented by each of the 10 main staircases that run from the ground to roof level. The platforms that particular staircases visit are a representation of either Norway, Sweden, Denmark or Germany. The largest platform (the roof) is dedicated to representing Germany, as this is the country receiving the most hazardous waste from the highest number of countries. There are 8 staircases running directly from ground level to this level, to show the large number of countries trading waste with Germany. The final two staircases bypass Scandinavia to show their part in the cycle.

The stairs and the cladding of the platforms are wooden, and the framework is steel. Each stair has subtle detailing in it's woodwork, to direct users in the appropriate direction. The framework will suspend the stairs from the platform above, as though the stairs were dripping from the highest platform.

Further development would see a greater complexity within the mass, a larger variety of 'meeting spaces', as well as a less rigid outer structure.



LOCATION WITHIN SITE



ELEVATION

The Users of the Structure would have the opportunity to bed small plants on the different platforms, or hanging from the structural cables. The plants would be a representation of the hazardous waste moving throughout the different countries. In time, we predict that the platforms representing the highest traders of hazardous waste will have the most plants. This is due to the relative accessibility to each platform, and the number of trading routes the different countries are working.

The highest platform (9.0m from ground) will have a view to the main stadium. Other platforms will be more enclosed, and over more private gatherings, as well as shelter from certain weather.

The plant beds will also act as seating for the users of the structure.